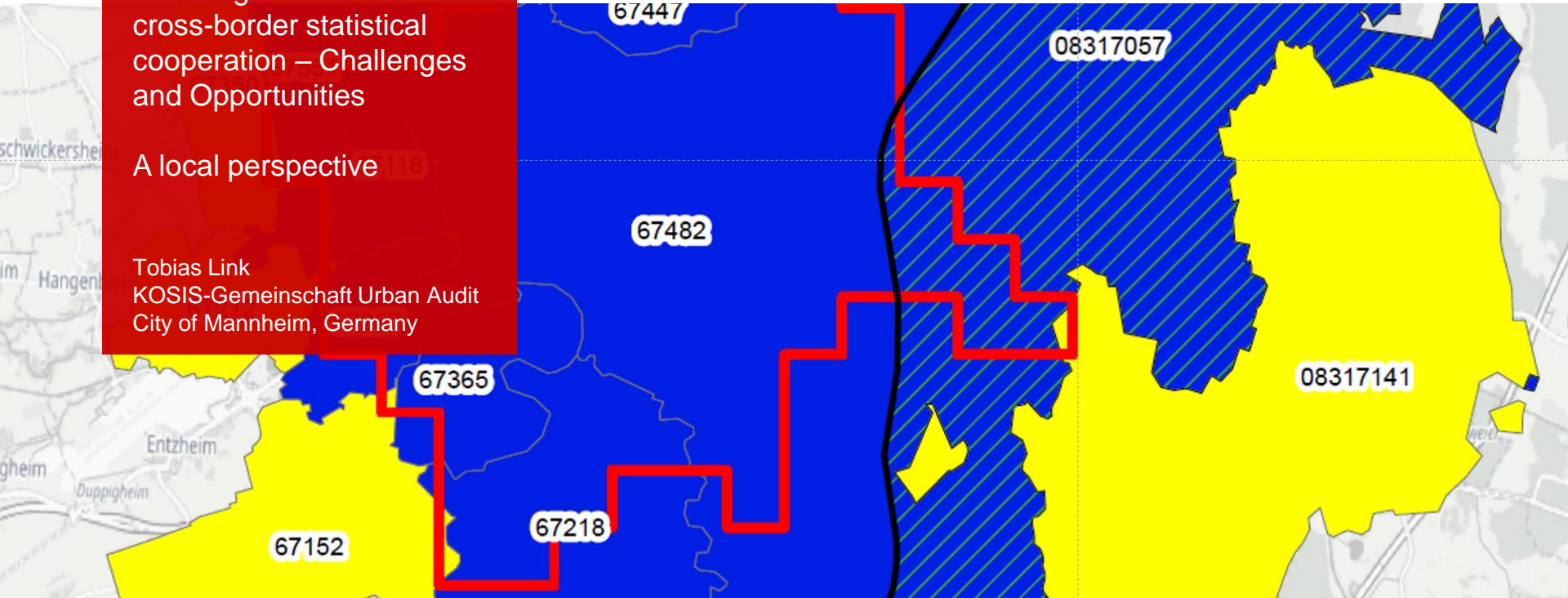


Breaking barriers on  
cross-border statistical  
cooperation – Challenges  
and Opportunities

A local perspective 

Tobias Link  
KOSIS-Gemeinschaft Urban Audit  
City of Mannheim, Germany



# TABLE OF CONTENTS

1. A local perspective : KOSIS Association Urban Audit
2. Cross-border cities around German territory
3. Cross-border cooperation by cities: Reality defines data needs
4. Opportunities / expectations and challenges from a local perspective

# A LOCAL PERSPECTIVE

from within a network of city statisticians

# A LOCAL PERSPECTIVE

## KOSIS Association Urban Audit

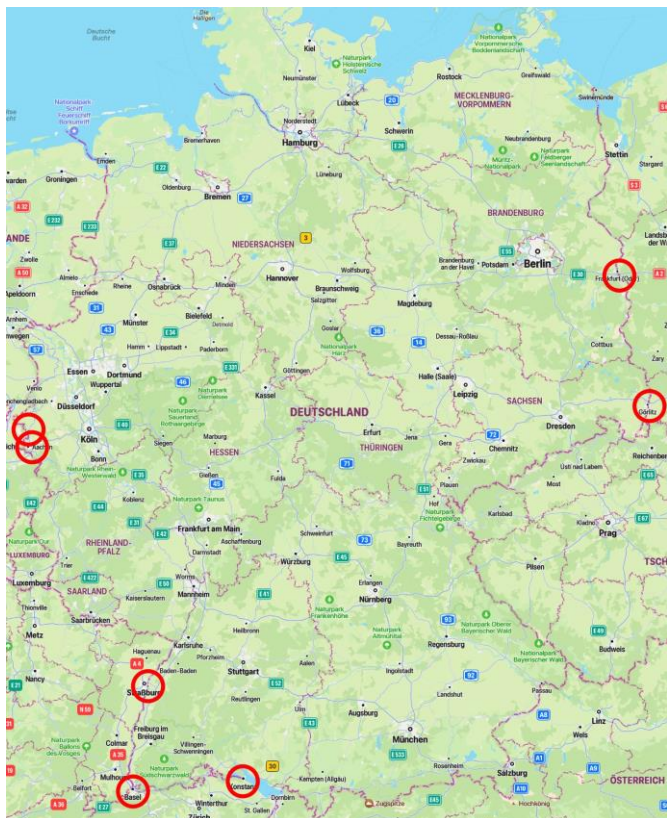
- A local perspective is the cities' perspective
- KOSIS: A network of city statisticians
  - The KOSIS network currently has 225 institutional members. Of these, 75% are municipalities, 8% are regions and counties and 17% are other regional authorities and institutions.
  - By agreeing on common standards and procedures, as well as through inter-community cooperation, each individual member is enabled both to benefit from the expertise of the entire network and to use the tools developed by the respective communities at low cost.
  - Urban Audit is one of twelve independent KOSIS associations
  - KOSIS Association Urban Audit works on behalf of the German national statistical institute on the City Statistics Grant — introducing a local perspective of the cities

→ Cooperation on city level to fulfil statistical tasks

# CROSS-BORDER CITIES

around German territory

# CROSS-BORDER CITIES AROUND GERMAN TERRITORY



Ctry1	Ctry2	Ctry3	Code	Name
DE	NL		CB001C	Aachen / Vaals
CH	FR	DE	CB002C	Basel / Saint-Louis / Weil am Rhein
DE	PL		CB004C	Frankfurt (Oder) / Słubice
DE	PL		CB006C	Görlitz / Zgorzelec
DE	NL		CB007C	Herzogenrath / Kerkade
DE	CH		CB009C	Konstanz / Kreuzlingen
FR	DE		CB011C	Strassbourg / Kehl

# CROSS-BORDER COOPERATION BY CITIES:

Reality defines data needs

# THE REALITY OF CURRENT CROSS-BORDER CITY COOPERATION

Health

Culture

Education

Public  
Transport /  
Mobility

**Cross-border City  
Cooperation**

Economy

Tourism

Public Safety

Regional  
Planning

STADTMANNHEIM<sup>2</sup>

Geoinformation  
und Stadtplanung



# THE REALITY OF CURRENT CROSS-BORDER CITY COOPERATION



Ohne Grenzen. Bez granic.



**GÖRLITZ**  
ZGORZELEC  
EUROPASTADT



Frankfurt-Slubicer Kooperationszentrum  
Ślubicko-Frankfurckie Centrum Kooperacji  
Holzmarkt 7  
D-15230 Frankfurt (Oder)

Tel.: +49 335 606985-0  
Fax: +49 335 606985-17  
mail@frankfurt-slubice.eu  
www.frankfurt-slubice.eu

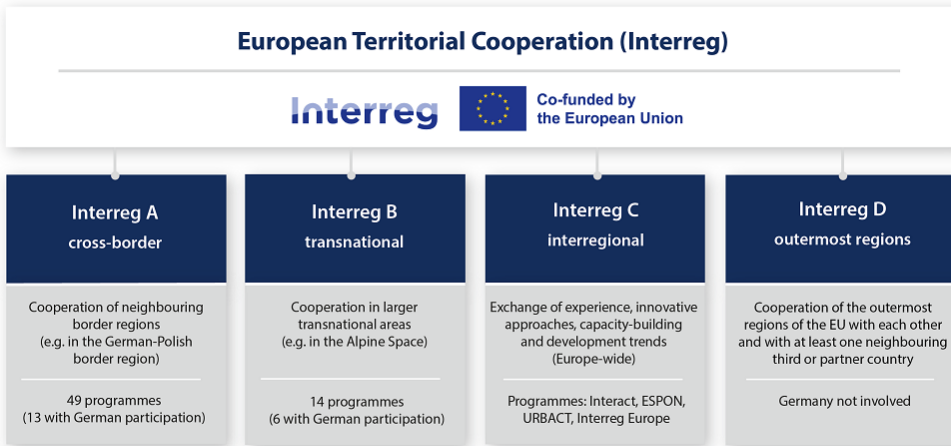


Dieses Projekt wird aus Mitteln des Europäischen Fonds für Regionale Entwicklung (EFRE) im Rahmen des Operationellen Programms der grenzübergreifenden Zusammenarbeit Polen (Wojewodschaft Lubuskie) – Brandenburg 2007-2013 gefördert. Grenzen überwinden durch gemeinsame Investition in die Zukunft



# THE REALITY OF CURRENT CROSS-BORDER CITY COOPERATION

The EU is already actively providing support for cross-border cooperation



AEBR  
AGEG  
ARFE



STADT MANNHEIM<sup>2</sup>

Geoinformation  
und Stadtplanung

# CROSS-BORDER COOPERATION BY CITIES

## Reality defines data needs

- There are many cross-border cooperation projects in existence
- The EU has a variety of different institutionalised offerings to provide support
- This focus on regional and local structural funding needs a good statistical basis to enable strategic project planning
- Having cross-border cities as a well-defined spatial entity in the city statistics data collection will help the local cooperation partners as well as the funding providers on EU level

# OPPORTUNITIES AND CHALLENGES

from a local perspective

# OPPORTUNITIES / EXPECTATIONS AND CHALLENGES

## from a local perspective

- For local decision makers, it is important that the data provided refers to existing “planning areas”, that is acknowledged by the local cooperation partners involved.
- The local data needs might go beyond what is available in the data catalogue. It is important to get in contact with and listen to people that are involved in cross-border projects.
- In the cross-border context, it is even more important that the methods used to calculate the different variables are comparable between the countries involved.
- Covering all the variables from the City Statistics data collection will be challenging given the differences in data availability.
- Close cooperation is necessary to overcome these existing hurdles. This might be a longer lasting process, but there is always a chance of learning from each other.

Thank you for your attention!